

Tour de Murrieta

RACE BIBLE

2018 Omnium

March 10 and 11, 2018



Table of Contents

Mayor’s Welcome Letter 3

Race Flyer 4

General Information and Policies 6

Jorge Alvarado Hot Laps Primes 8

GC Prize List 10

Omnium Points Schedule 11

Grand Prix Map and Course Description 12

Circuit Race Map and Course Description 13



CITY OF MURRIETA

As Mayor of Murrieta, and on behalf of our citizens, I welcome you to the 2018 Tour de Murrieta!

For the past several years, this event has been a signature event in Murrieta. I applaud each and every one of you for making a personal commitment to train for and participate in this year's race. We believe Murrieta is a fabulous place to ride, and train, with its scenic charm and mild terrain.

Through the many hours of efforts by a dedicated committee, this race continues to be a big success. A big thank you to the sponsors, as well as the volunteers, for putting this year's event together; GREAT JOB, as always!

If you are not from Murrieta, I hope you have a chance to explore Murrieta's downtown area that makes Murrieta unique. The City as a whole encompasses approximately 1,350 acres of trails, open space, streetscape, slope and park land, including 50 parks, and a number of natural areas. We also have an impressive 20+ mile network of trails for walkers, runners, bikers, and others to enjoy.

Thank you again for your participation and for coming to Murrieta for this great, long-time event! Good luck!

Sincerely,

Mayor Jonathan Ingram
City of Murrieta

Results by ONE2GO EVENT SERVICES and announcing by David Worthington

Tour de Murrieta

March 10 and 11, 2018



Downtown Racing at its Best!	Saturday, March 10		Sunday, March 11				GC Prize *Guaranteed/ **Maximum Payout	Entry Fee
	Grand Prix		Circuit Race	Payout GC	Places	Total		
Categories	Start	Time	Start	Laps	Dist	Places	Total	For Each Stage
Category 5	7:30am	35 min	7:35am	11	39 miles	5	Trophy	\$40
Category 4	8:10am	40 min	7:30am	11	39 miles	10	*\$330	\$40
Women 4/5	8:55am	30 min	7:40am	9	31 miles	5	Trophy	\$40
Masters 30+ 3/4	9:30am	40 min	1:55pm	11	39 miles	10	*\$330	\$40
Masters 40+ 1-4	10:15am	50 min	11:45am	13	46 miles	10	*\$300**\$600	\$40
Women Pro 1-3	11:10am	50 min	9:40am	12	43 miles	15	*\$522**\$1,045	\$40
Kids' Race, 12 & Under	12:00pm		No Kids' Race on Sunday				Medals	Free!
Pro Men 1/2	12:30pm	75 min	2:00pm	16	56 miles	20	*\$1,500**\$3,000	\$45
Category 3	1:50pm	45 min	9:35am	13	46 miles	10	*\$440	\$40
Masters 50+/60+ 1-4**	2:40pm	50 min	11:50am	11	39 miles	10/8	*\$400 (50+) *\$250 (60+)	\$40

*The guaranteed GC prize will be paid for fields of 50% or less for the Masters 40+, Women Pro 1-3; and Pro Men 1-2. **The promoter will adjust overall GC prize list and incrementally increase to the maximum payout based on the number of entries received (ie: Full field = maximum payout; 75% of field limit = 75% of maximum payout). All other categories will receive the guaranteed GC prize regardless of field size. ***Masters 50+ and 60+ race concurrently but scored separately.

JORGE ALVARADO "HOT" LAPS

Brought to you by:



The Jorge Alvarado prime laps will consist of \$25 per designated laps for eligible categories!!

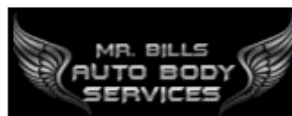
- All USAC Rules & Regulations apply.
- Pro Men 1-2 limited to field of 120; Women Cat 4/5 and Men Cat 5 limited to 75; All others limited to 100.
- OMNIUM POINTS schedule can be found in the Race Bible.
- JL Velo Champion Jerseys to overall winners, Leader's Jerseys for Pro Men 1/2, Elite Women Pro 1-3.

- Race Hotel: Comfort Inn & Suites 951-894-7227 (Close enough to ride to the start of both stages).
- Check-In & Registration information on page 2.
- NO REFUNDS. Races Held Rain or Shine.
- Pre-reg strongly recommended, categories will fill and waiting lists will be created at event site only.
- One day race license available for Women and Men Cat 5.
- Additional Grand Prix or Circuit Race entry is \$15.
- Online Registration ONLY at bikereg.com Deadline is 11:59PM March 8, 2018. Day of Registration, late fee is \$10. Cash or Check only, no Credit Cards on race day. Absolutely no mail-ins.
- Saturday - Tour de Murrieta EXPO, including food, drinks, and kid friendly activities in the Senior Center Parking lot.
- KIDS BIKE RACE Saturday 12:00PM. Sponsored by Pacific Western Bank. Medals to all participants!

••• A Big Thank You to our Race Sponsors •••



www.facebook.com/TourDeMurrieta



2018
Omnium Event

Tour de Murrieta

March 10 and 11, 2018



Stage 1 & 2 - Grand Prix and Circuit Race Registration, Check-In, and Grand Prix Staging

- Saturday - Check-In starts 6:00am at the Murrieta Senior Center parking lot, located at Juniper & Adams.
- Sunday - Check-In starts 6:00am at the corner of Washington & Ivy.
- Sign in and race day registration one hour before each race. Closes 10 minutes before race time.
- The Grand Prix staging area will be at the driveway between the Expo and the Kiddie Academy of Murrieta, directly across Adams Avenue and neutral support. All riders **MUST** report to this area **10 minutes** before the start of their race for pre-race briefing and instructions. Riders who fail to report to the staging area may be penalized. No instructions will be given at the start line.

Course Information - Visit www.s2ccycling.com for more detailed information

STAGE 1 Grand Prix: The Grand Prix is not your typical industrial park event! The course consists of six corners, approx. 1 mile per lap, fat, fast, and technical. Streets: Start/Finish line is on Juniper, left on Town Center Drive N., left Town Center Drive W., left on Adams, right on B St., left on Washington, left on Juniper. <http://www.mapmyride.com/routes/view/26281238>

STAGE 2 Circuit Race: The Circuit Race is approx. 3.5 miles per lap, mostly flat, with a couple of big ring rollers. Flat finish, 21 gear is more than enough. The finish line is on Washington Street, right on Guava, right on Hayes, right on B Street, right on New Clay, left on Ivy, and right on Washington. <http://www.mapmyride.com/routes/view/26281330>

Directions & Parking - Visit www.s2ccycling.com for more detailed information

Grand Prix: Google Map "Kalmia & Adams, Murrieta, CA" Park in the surrounding neighborhood or school. **DO NOT PARK IN THE EXPO AREA OR SENIOR CENTER.**

Circuit Race: Google Map "Washington & Ivy St, Murrieta, CA" Staging is at the corner of Ivy Street and Washington. Park in downtown Murrieta. Do not park on Ivy Street across registration and north of Washington Street (N/E corner of Ivy and Washington), and in business' parking lots. **You will either be cited or towed.** They will be open for business and we do not want to take their spots.

Thanks to our Race Sponsors:



Welcome to the 13th Annual Tour de Murrieta

March 10 and 11, 2018

Race Bible

Dear Race Participant:

Please take the time to read through this race bible and familiarize yourself with what will be expected of you. You are responsible for reading and following the rules set forth for this event.

We would like to personally thank you for your participation in this year's Tour de Murrieta. With the continued support of a great cycling club and local city officials, we continue to fine tune and put together a quality event that gives back to our cycling community and the sport. We have made arrangements for police and course marshals to ensure safety and order. Please pay respect to local residents, volunteers, corner marshals, technical support staff, etc. They have all donated their time to make this event happen. Please take the time to thank them.

Our current sponsorship and the city's support have allowed us to have another high quality event. A downtown criterium style finish makes it more accessible to the public, as opposed to an industrial park criterium. **We ask for your continued cooperation in making this event one we can all count on for years to come!** To that end, we ask that you extend every courtesy to the **businesses** and **residents** that will be affected by our event.

Of particular concern at each of our venues is **Parking**. Park only where indicated. No parking in the downtown shopping centers—please use surrounding streets and public parking. **Park where you aren't supposed to and you risk being disqualified and/or towed!** RV parking may be allowed in the City of Murrieta parking lot starting on Friday after 4:00 PM through Sunday only. **This is subject to change every year.** Individuals are responsible for **policing their trash and ensure the area is clean before departing.**

Portable toilets will be available for your use. **Use them and DO NOT just go off into the bushes.** Nothing will get us kicked out of a great venue faster than people disrespecting public and private property by using it as their toilet. **USE THE PORTABLE TOILETS OR BE DISQUALIFIED!!! This is your only warning.**

NUMBERS:

Each race packet should contain your TWO race numbers. Numbers may not be folded or trimmed. Both numbers **MUST** be worn at all times. **The same numbers will be worn for both stages.** Replacement numbers are available for \$15-no exceptions.

PRIZES:

Prizes for individual stage placing will be awarded after results have been made final. General Classification prizes will be distributed on **SUNDAY** after the Circuit Race. Failure to attend the awards ceremony may result in forfeiting of all prizes. Award ceremonies will take place throughout the day. *Any prizes not claimed after 4:30 pm on Sunday of the above date will be forfeited.*

Prize list may be altered based on field registration: 100% - 100%; 75% - 75%; etc.

GC TIE BREAKERS: The default method of breaking ties is the finish order in the most recent stage per USAC Rule 3H4 (g)(ii) .

STAGE WINNERS: The top three finishers of both stages must report to the podium immediately for unofficial award ceremonies.

GC LEADERS JERSEY:

The overall race leaders (Pro Men 1/2 and Women 1-3) are required to wear the official Tour de Murrieta Race Leader's Jersey. If you retain leadership, you are responsible for washing and wearing your leader's jersey for subsequent stages. If you lose leadership, you must wash and return the leader's jersey at least one hour prior to the start of the stage. **Failure to wear the leader's jersey** will result in the start being refused, and disqualification along with \$36.00 (50 CHF) fine.

RACE LOCATIONS:

Grand Prix

The Grand Prix is not your typical industrial park event! The course consists of six corners, approximately 1 mile per lap, flat, fast, and technical. Streets: Start/Finish line is on Juniper, left on Town Center Drive N., left Town Center Drive W., left on Adams, right on B Street, left on Washington, left on Juniper. See map on page 10 for details. <http://ridewithgps.com/routes/253777>

Google Map "Juniper & Adams, Murrieta, CA" Park in the surrounding neighborhood or school.

Circuit Race

The Circuit Race is approximately 3.5 miles per lap, mostly flat, with a couple of big ring rollers. Flat finish, 21 gear is more than enough. The finish line is on Washington Street, right on Guava, right on Hayes, right on B Street, right on New Clay, left on Ivy, and right on Washington. See map on page 11 for details.

Google Map "Washington & Ivy St, Murrieta, CA" Staging is at the corner of Ivy Street and Washington. Park in Historic Downtown Murrieta. **Do not park on Ivy Street across registration and north of Washington Street (N/E corner of Ivy and Washington).**

For all events, please do not park in business' parking lots. You may be towed. They will be open for business and we do not want to take their spots. <http://ridewithgps.com/routes/253779>

STAGING:

The Grand Prix staging area will be at the driveway between the Expo and the Kiddie Academy of Murrieta, directly across Adams Avenue and neutral support. All riders **MUST** report to this area 10 minutes before the start of their race for pre-race briefing and instructions. **Riders who fail to report to the staging area may be penalized.** No instructions will be given at the start line.

RACE HOTEL: Comfort Inn & Suites 951-894-7227

Both stages are an easy ride from the host hotel. You are encouraged to leave your car at your hotel and ride to the course.



Bike Injury Lawyer

In loving memory of Jorge Alvarado - Our Friend and Teammate

Jorge Alvarado “Hot Laps” Primes

Brought to you by:

In a continued effort to honor a fallen friend and former teammate of CA Pools Cycling team, the Jorge Alvarado Hot Lap Primes will replace the Team Competition in 2018. The Hot laps will ensure Jorge’s aggressive and unrelenting riding style is never forgotten. The Hot Lap Primes will be offered to all eligible categories.

Jorge was a member of the former CA Pools Cycling Team, which is now known as Stage 2 Cyclery / Bosch pb JL Velo Cycling Team. Jorge was also a member of other Southern CA cycling teams (Kahala-LaGrange and Bahati Foundation). Jorge was a bright star in SoCal’s cycling community and had a big future in the sport of cycling. His potential was unlimited and in 2010, his talent was starting to develop as he rode off the front in several break away moves in the San Dimas Road Race and Criterium, Redlands Criterium, and Easter Sunday Grand Prix, as well as winning the UCLA Road Race. Unfortunately, the young life of this rising pro cyclist was cut short when he was struck by a vehicle in San Bernardino, CA.

As teammates and friends, Stage 2 Cyclery / Bosch pb JL Velo Cycling Team has vowed to never forget the great impact he had not only in our personal lives, but also in the amateur and professional ranks. In Jorge’s honor, Stage 2 Cyclery / Bosch pb JL Velo Cycling Team is proud to present the **Jorge Alvarado Hot Laps** courtesy of Seth Davidson Law, Bike Injury Lawyer!

RACE NEUTRALIZATION:

Race neutralization is a short-lived stoppage or pausing of a race. Race neutralizations are used most often in road racing to facilitate the passing of one race field by another race field.

Why?

USA Cycling (USAC) Racing Rules state: Taking pace or assistance from any outside means is forbidden, including holding on to a motor vehicle or taking pace from riders in a different race that is concurrently on the same course [relegation or disqualification].

Keeping in mind those riders in different races may not “take pace” from those in another race the concept and practice of neutralizing the slower race has been developed. Very occasionally the faster race is neutralized to allow the slower race to finish without interference.

We would rather NOT do race neutralization; however, with the number of race categories and athletes, it is necessary to run more than one race on the circuit to accommodate all those who wish to compete. It is not unusual for one race to overtake another in this situation. Without intervention, the races sometimes finish together in one field distorting the results of both races and making it difficult, if not impossible, to separate the placing. When races combine in this manner, it affects the conduct of the event and the strategies of the athletes. It does not provide a fair competition for either race when this occurs.

How?

An official, usually a motorcycle referee, will signal the neutralization of the slower race by a double sounding of a whistle (or horn) and/or by raising a red flag or barrage paddle. The official may also indicate that the riders in the field should stay to the left or right side of the race courses.

As soon as the neutralization is signaled, the riders in the field being neutralized should slow and remain behind the neutralizing vehicle until the neutralization is ended by a single sounding of a whistle or horn, and/or by withdrawing the red flag or barrage paddle. The neutralization is usually terminated when the faster race is 30 seconds to 1 minute ahead of the slower race OR when the official deems it appropriate.

Very often, in the case of a small breakaway it is not necessary to neutralize the breakaway when it is necessary to neutralize the field. This is the normal practice and may be an advantage for the breakaway riders.

Rider Conduct

Racers should remember at all times that they are representatives of their sponsors, USA Cycling (USAC), and the race's sponsors. They should conduct themselves appropriately. Ride as safely and courteously as possible and obstruct traffic as little as possible.

HELMETS must be worn and secured at all times while on the bicycle.

TRAFFIC CONTROL: Generally the lead racer(s) and main pack will be directed through intersections. Racers dropped by the main field outside their race caravan should be **alert and ready to obey traffic LAWS**. Know your course you are responsible to know the course you are racing.

CENTERLINE RULE: **If no painted centerline marking exists, riders must keep to the right side of the road at all times.** Not all the roads are closed to traffic. Although traffic is limited only to residents, be mindful of approaching vehicles.

Riders may make FULL use of the road **AFTER** the right turn from *Hayes Ave onto B Street*. Full road use will be allowed on *B Street, New Clay Street, Ivy Street and Washington Ave* up to the intersection of Washington & Brown. **Riders must NOT be on the left side of the center line after Brown Street.** The course will be clearly marked where riders may make use of the full road. All other sections of the course, riders **MUST** stay to the right side of the center line.

Advancing your position/passing to the left of the centerline will be enforced and subjects you to disqualification.

Main fields (packs) will have a lead police motorcycle escort.

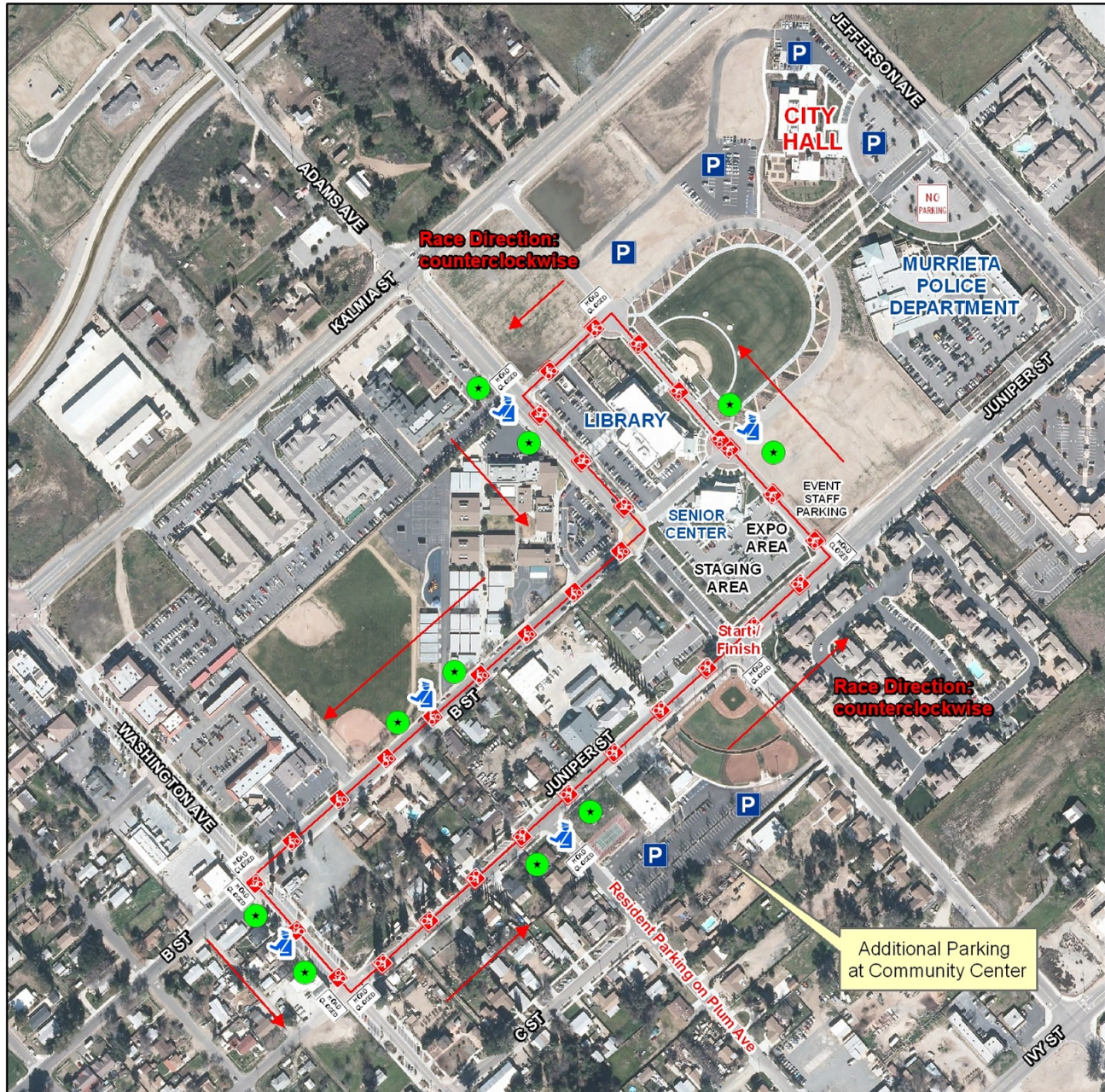
OMNIUM GENERAL CLASSIFICATION

									WOMEN	WOMEN
	Pro 1-2	3	4	5	30+ 3/4	40+	50+	60+	1 -3	4/5
1st	650	110	60	Trophy	60	150	105	60	180	Trophy
2nd	385	70	50	Trophy	50	110	70	50	135	Trophy
3rd	285	50	45	Trophy	45	75	50	40	100	Trophy
4th	230	45	40	Trophy	40	65	40	30	80	Trophy
5th	195	40	35	Trophy	35	50	35	25	75	Trophy
6th	160	35	30		30	40	30	20	70	
7th	140	30	25		25	35	25	15	65	
8th	125	25	20		20	30	20	10	60	
9th	110	20	15		15	25	15		55	
10th	95	15	10		10	20	10		50	
11th	85								45	
12th	80								40	
13th	75								35	
14th	70								30	
15th	65								25	
16th	60									
17th	55									
18th	50									
19th	45									
20th	40									
Total Purse	\$3000	\$440	\$330	NA	\$330	\$600	\$400	\$250	\$1,045	NA

Omnium Points Schedule

Grand Prix and Circuit Race

Place	1	2	3	4	5	6	7	8	9	10	11	12	13	14	15	16	17	18	19	20	21	22	23	24	25
Pro1-2 Men	30	29	28	27	26	25	24	23	22	21	20	19	18	17	16	15	14	13	12	11	10	9	8	7	6
Men 30+ 3/4	30	29	28	27	26	25	24	23	22	21	20	19	18	17	16	15	14	13	12	11					
Cat 3 Men	30	29	28	27	26	25	24	23	22	21	20	19	18	17	16	15	14	13	12	11					
Cat 4 Men	30	29	28	27	26	25	24	23	22	21	20	19	18	17	16	15	14	13	12	11					
Cat 5 Men	30	29	28	27	26	25	24	23	22	21	20	19	18	17	16	15	14	13	12	11					
Master 40+ Men	30	29	28	27	26	25	24	23	22	21	20	19	18	17	16	15	14	13	12	11					
Master 50/60 Men	30	29	28	27	26	25	24	23	22	21	20	19	18	17	16	15	14	13	12	11					
Women 4/5	30	29	28	27	26	25	24	23	22	21	20	19	18	17	16	15	14	13	12	11					
Women 1-2-3	30	29	28	27	26	25	24	23	22	21	20	19	18	17	16	15	14	13	12	11					



TOUR DE MURRIETA BICYCLE RACE

Critierium Course Traffic Control Plan

MAP KEY

- Critierium Course
- Course Marshal
- PD Volunteer

This map is a public resource of general information. The City of Murrieta makes no warranty, representation or guaranty as to the content, accuracy, or completeness of the map information provided herein. City of Murrieta is not responsible for any claims, losses or damages resulting from the use of this map.

Circuit Race



TOUR DE MURRIETA BICYCLE RACE

Road Course- Traffic Control Plan



Map Key	
	Race Course
	Course Marshal
	PD Volunteer
	Port-A-Potty

Course Distance: 3.5 miles



This map is a public resource of general information. The City of Murrieta makes no warranty, representation or guaranty as to the content, accuracy, or completeness of the map information provided herein. City of Murrieta is not responsible for any claims, losses or damages resulting from the use of this map.